

Quick Installation Guide BEWARD N Series IP Video Cameras for Microsoft® Windows



This quick installation guide provides brief instructions for accessing and getting image from the video cameras connected via wires. More detailed information for a certain camera is contained in a corresponding **Operations User Manual for BEWARD IP Video Cameras** or **Installation User Manual for BEWARD IP Video Cameras**, which are parts of the documentation on the CD that comes with every BEWARD IP video camera.

Liability Restriction

This product supplies with limited warranty. BEWARD Co, Ltd does not guarantee that the hardware platform will work as required in all spheres and programs, which are implicit or expressed about quality, working properties and working efficiency while being used for specific purposes. BEWARD Co, Ltd is not liable for guarantee bonds when device or device interfaces are damaged (network, signal and other), which are result of:

- 1) irregularity of transportation and storage;
- 2) force majeure (such as fires, flood, earthquake, etc);
- 3) technical requirements violation of placing, installation and exploitation;
- 4) incorrect firmware update;
- 5) unintended use;
- 6) mechanical, thermal, chemical and other influence, if these parameters exceed maximum operation characteristics or they are not stipulated by technical specification for the product;
- 7) high voltage influence (lightning, static electricity, etc);
- 8) use a power adapter not from the delivery package;
- 9) use a camera outdoor (for outdoor cameras) without lightning protection device;
- 10) use a camera with faults in housing tightness.

BEWARD Co, Ltd is not liable for actions of Internet service providers, electricity supply services, emergency services and security services. BEWARD Co, Ltd is not liable for failures and errors in operation of computers and network equipment.

Recommended System Requirements

- Microsoft® Windows 2000, Windows XP SP3, Windows Vista, Windows 7
- Browser: Internet Explorer 7.0 or later
- Network interface card
- 2 GHz Pentium 4 processor or AMD Athlon
- 64 MB (128 MB) video card
- 512 MB RAM

Main Features

- Progressive scan CMOS sensor
- Resolution up to 1280x1024 (for N13100/13100W)
- H.264/MPEG-4/MJPEG (H.264 is available only for N13100/13100W)
- Two-way audio
- Mobile phone access support
- Easy installation of UPnP
- Sending via e-mail and to FTP permanently or by events

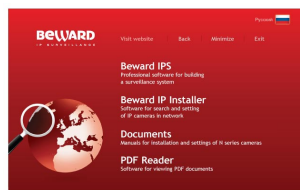
Delivery Package

- IP video camera with installed lens (depends on model of camera)
- DC power adapter (depends on model of camera)
- Bracket (depends on model of camera)
- Wi-Fi antenna(for Wi-Fi cameras only)
- CD containing software and documentation
- Quick installation guide
- Package

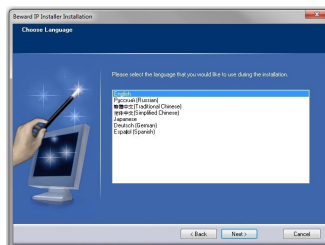
■ 1 ■

1. Installing the software for searching and setting of IP video cameras.

1.1. Insert the CD from your camera delivery package into a CD-ROM drive. If CDs autorun is off, select the CD drive and open «**autorun.exe**» manually. Select «**Beward IP Installer**» (the software for searching and setting of IP cameras in a network).



1.2. After that, installation of «**Beward IP Installer**» software will start. Follow instructions of the installation wizard until the installation ends.



■ 2 ■

2. IP video camera connection.

2.1. Plug a Ethernet cable to your camera, connect the other cable end to a local network or directly to a PC (see more details in a corresponding user installation manual, which is a part of documentation on the CD).

2.2. Only a power adapter from the delivery package or switch(router, injector) with PoE support for cameras power supply.



ATTENTION! PoE (power of IP video cameras via twisted pair) is unavailable for some cameras. Please refer to Operations user manual for more information about PoE support. Simultaneous supply from switcher (router, injector) with PoE support and power adapter is prohibited!

■ 3 ■

3. Connection settings (by the example of Windows 7)

3.1. Default IP address of BEWARD N series IP cameras is **192.168.0.99**. For connection to a camera it is necessary to set your PC and the camera to the same subnet, which means that its IP address must be in the following range: **192.168.0.1-255**. If you are sure that IP address of a network interface card of your PC, connected to the same network as the camera, is **192.168.0.XXX**, then you can skip 3.2 - 3.9 paragraphs.

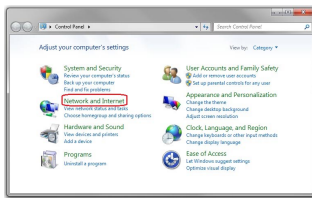
ATTENTION! All the cameras have identical default IP address **192.168.0.99**. Do not connect several cameras simultaneously to a local network for their original setting! If you are going to use several IP cameras, then you need to change their IP addresses so that they would not coincide within a local network!

3.2. Open [Start] and click [Control Panel].

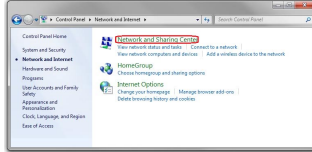


■ 4 ■

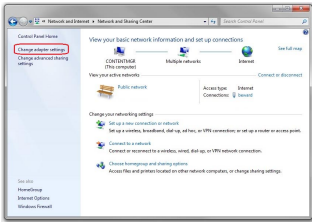
3.3. Select **[Network and Internet]** in **[Control Panel]** window.



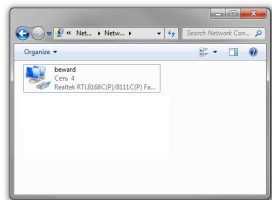
3.4. Select **[Network and Sharing Center]** in the opened window.



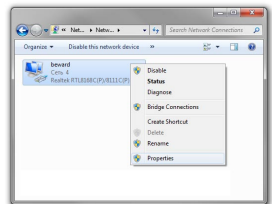
3.5. Next, go to **[Change adapter settings]** in the left column.



■ 5 ■

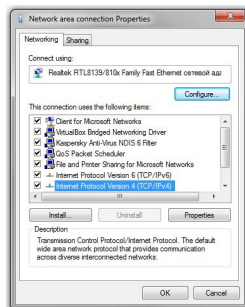


3.6. To change network settings select the network interface card of your PC, the camera connected to.



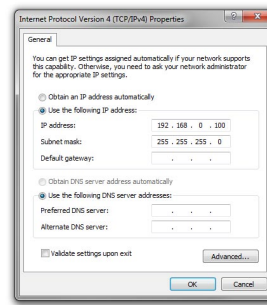
3.7. Click right mouse button on the required network interface card. Select **[Properties]** in the drop-down menu.

3.8. The window of the network interface card properties opens. To set an IP address click on **[Internet Protocol Version 4 (TCP/IP)]** and click the **[Properties]** button.

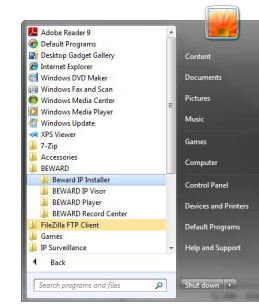


■ 6 ■

3.9. In the appeared window choose **[Use the following IP address]**, enter an IP address **192.168.0.XXX** in the IP address field (for example, **192.168.0.100**), subnet mask **255.255.255.0**.



ATTENTION! To prevent coincidence of IP addresses you need to coordinate all IP addresses of the cameras with system administrator of your local network. Otherwise, if IP addresses coincide, network equipment of the local network will operate incorrect.

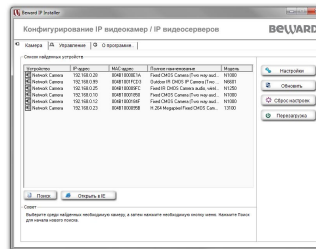


4. Obtaining image from a camera

4.1. Launch Beward IP Installer software (default location of the software is: **C:\Program Files\Beward\Beward IP Installer**). To launch it go to **Start – All Programs – Beward – Beward IP Installer** and choose **[Beward IP Installer]**.

■ 7 ■

4.2. In the appeared software window click **[Search]** button, after a while it will find all the BEWARD N series IP cameras that are located in the corresponding local network (to start search in Windows XP it is necessary to install UPnP support).



ATTENTION! Search of IP video cameras can be locked by third party software: firewalls. To prevent it, add **Beward IP Installer** software to the list of safe software .

4.3. Click left mouse button on the string with a required camera, then click **[Open in IE]** button. Windows security window will open to enter user name and password in Internet Explorer.

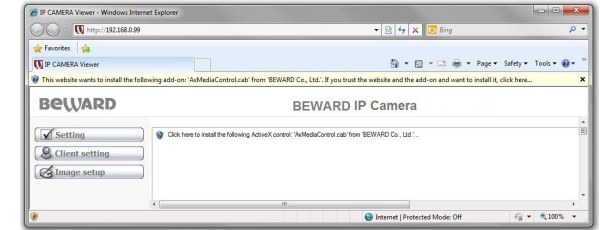
4.4. Enter **[User name]**, **[Password]** and click **[OK]** button, after that the camera web interface window will open.



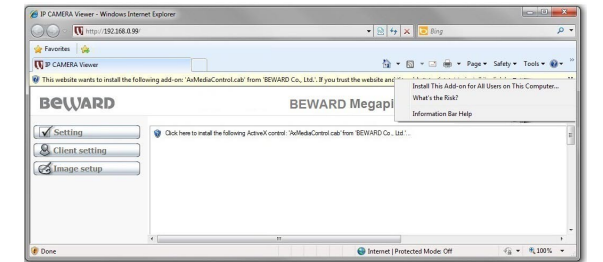
ATTENTION! Default user name is **admin**, default password is **admin**.

■ 8 ■

4.5. After successful authorisation you will be offered to install an ActiveX add-on. You will see a system notification below the address bar.



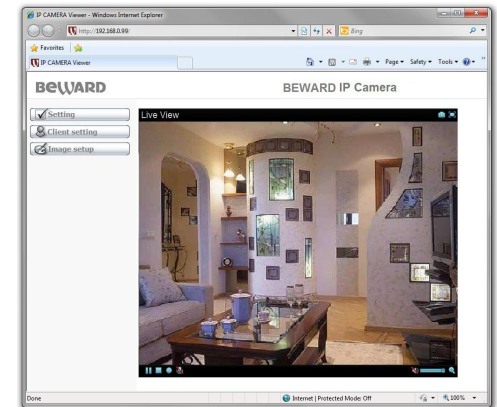
4.6. Click right mouse button on the system notification. In the appeared menu select **[Install This Add-on for All Users on This Computer...]** or click on the following message **[Click here to install the following ActiveX control]** and select **[Install This Add-on for All Users on This Computer...]**.



■ 9 ■

4.7. Windows 7 prevents launch and installation of software by default. In the appeared **[Security Warning]** window you need to click **[Install]** to continue the ActiveX add-on installation.

4.8. The ActiveX add-on is installed now and after a while, if everything was done correctly, you will see image from your camera.



■ 10 ■