

Software User Manual

www.beward.eu

BEWARD IP Installer

- User friendly interface
- Quick search and setting of N series IP cameras



Table of contents

CHAPTER 1. HOW TO USE INTELLIGENT IP INSTALLER.....	2
1.1. INITIAL USE INTELLIGENT IP INSTALLER.....	2
CHAPTER 2. CONFIGURATION OF MAIN MENU	3
2.1. MAIN MENU.....	3
CHAPTER 3. CAMERA.....	4
3.1. SETUP.....	5
3.2. UPGRADE.....	9
3.3. FACTORY DEFAULT.....	10
3.4. REBOOT.....	11
CHAPTER 4. USER	13
4.1. INFO.....	15
4.2. USER.....	16
4.3. DATE/TIME	18
4.4. TCP/IP	19
4.5. PPPoE.....	20
4.6. DDNS.....	21
CHAPTER 5. ABOUT.....	23

Chapter 1. How to use Intelligent IP Installer

This chapter introduces how to monitor the image from the camera using Intelligent IP Installer. The IP cameras can be used with Microsoft web browser and Intelligent IP Installer in Windows operating systems. This document focuses on introducing you Intelligent IP Installer. If you want to know how to use IP cameras with Microsoft web browser, please check the camera user manuals.

1.1. Initial use Intelligent IP Installer

Step 1: install the program of Intelligent IP Installer.

NOTE!

If you use Windows 98 or ME, please install IP Installer before using WEB UI to ensure the system runs normally.

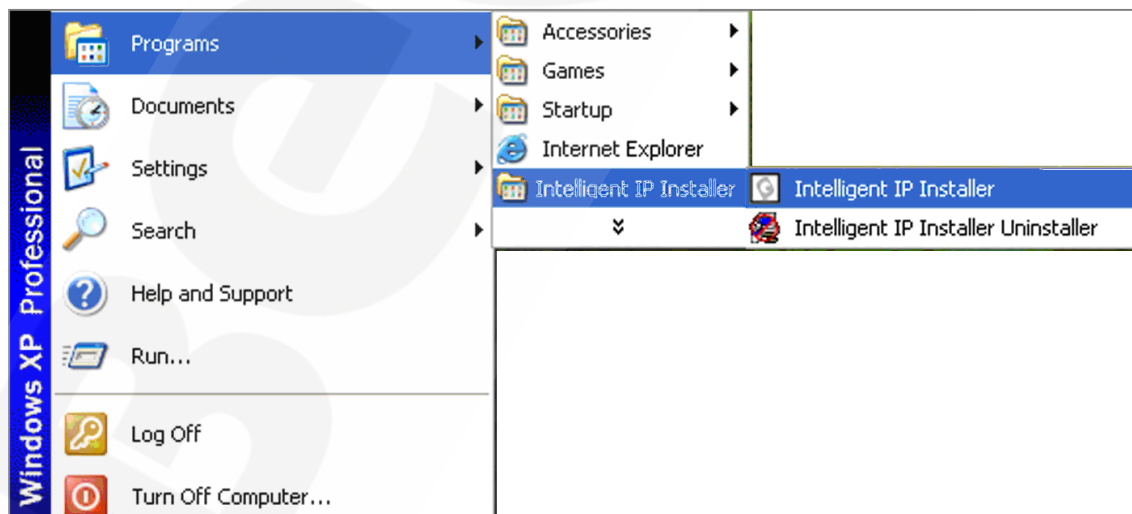
If you cannot view the recorded video file (missing video decoder), please install Xvid codec while installing Intelligent IP Installer (for Windows 98, ME or 2000 server, the codec might not work properly. You will need to download Xvid codec 1.0 from the Internet.)

Step 2: download and install ffdshow program. After Intelligent IP Installer installed, ffdshow link will appear. Please link to ffdshow tryouts to download and install the program.

NOTE!

Ffdshow is for supporting H.264 codec for higher quality video streaming.

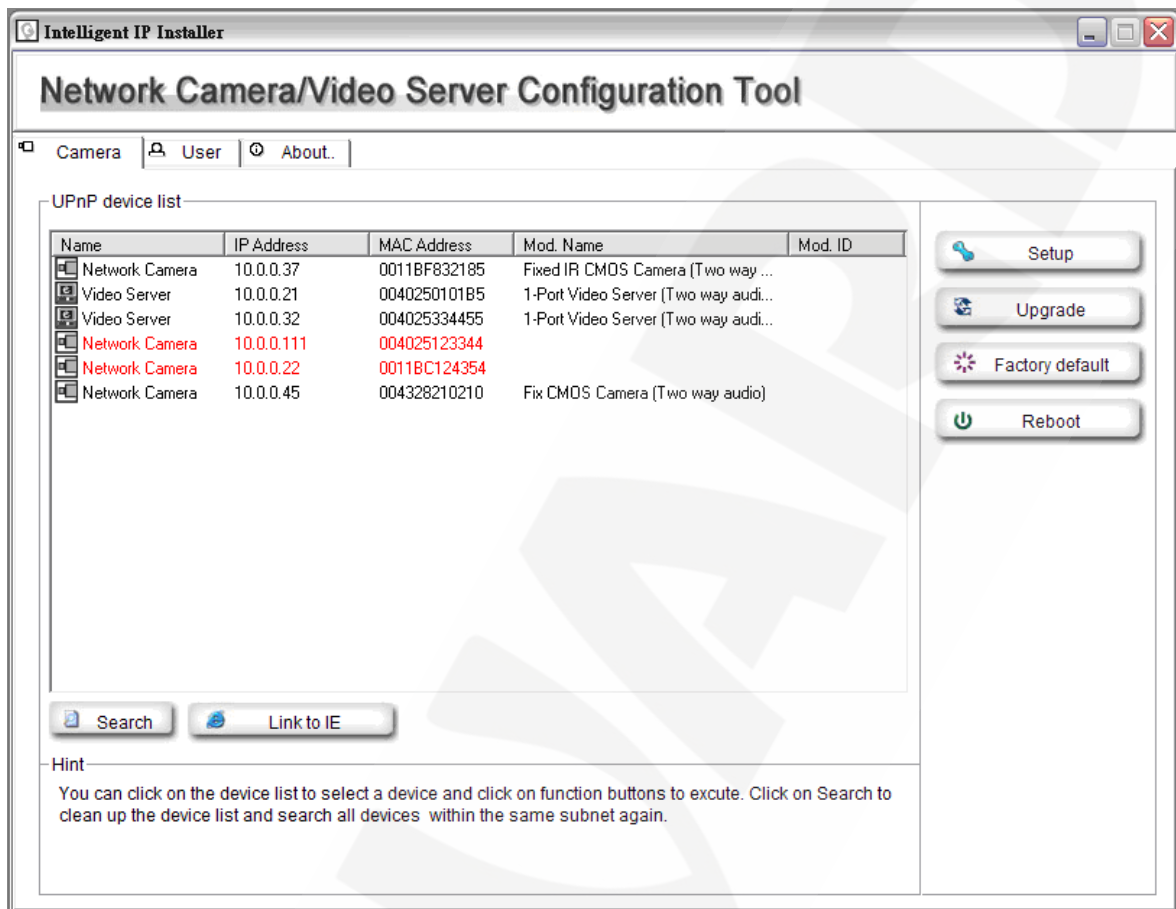
Step 3: click **Start -> Program Files -> Intelligent IP Installer -> Intelligent IP Installer** to start using the program. *Picture 1.1.*



Pic. 1.1

Chapter 2. Configuration of main menu

Picture 2.1.



Pic. 2.1

2.1. Main menu

Camera

Click this button to get into common information of all Network Cameras in local network. You can connect the specific Network Cameras to get live video and to optimize video setting.

User

Click this button to get into user basic setting information of all Network Cameras in network. You can connect the specific Network Cameras to get and set basic values. This section includes Info, User, Date Time, TCP/IP, PPPoE and DDNS.

NOTE!

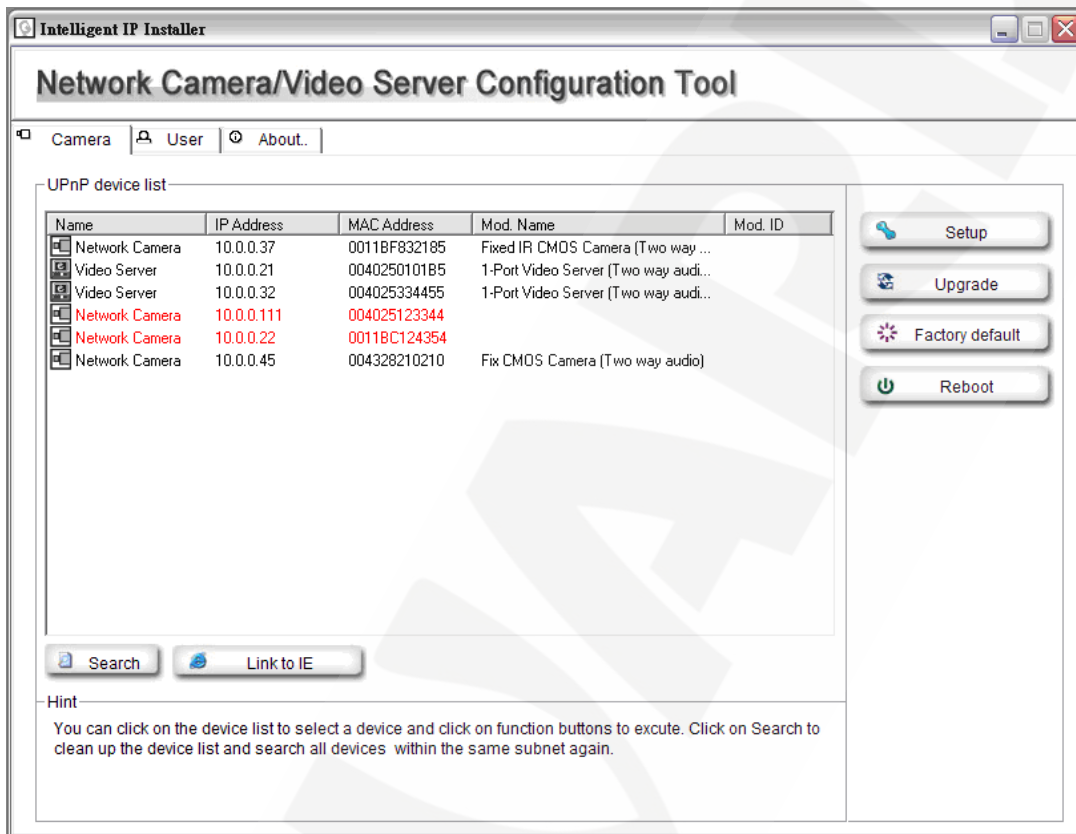
Only the administrator has access to the Settings.

About

Click this button to get the information about Intelligent IP Installer.

Chapter 3. Camera

The Camera page provides you all Network Cameras in the network with product factory information, including product Name, IP Address, MAC, Mod. Name and Mod. ID. *Picture 3.1.*



Pic. 3.1.

Search: click it to search Network Cameras in the network; it displays Network Cameras information including Name, IP Address, MAC, Mod. Name and Mod. ID.

NOTE!

If the camera is not located in local network, it will appear in red text. Some information is not available when the IP camera is not in local network.

The IP addresses shown in the "IP Address" field reflect those on the local network. They may be from the DHCP server. If there is no DHCP server, the video server will try to find a free IP address (this takes from 15 second to 3 minutes, depending on the LAN status). The method of finding IP address is seeking from 192.168.1.2 to 192.168.1.254. If any of the addresses inside this range is free, the Network Video server will be assigned to this IP address, and its subnet mask would be 255.255.255.0.

Link to IE: after searching Network Cameras in network, you can click to specific Network Cameras in search area and press **[Link to IE]** to use IP cameras with Microsoft web browsers.

3.1. Setup

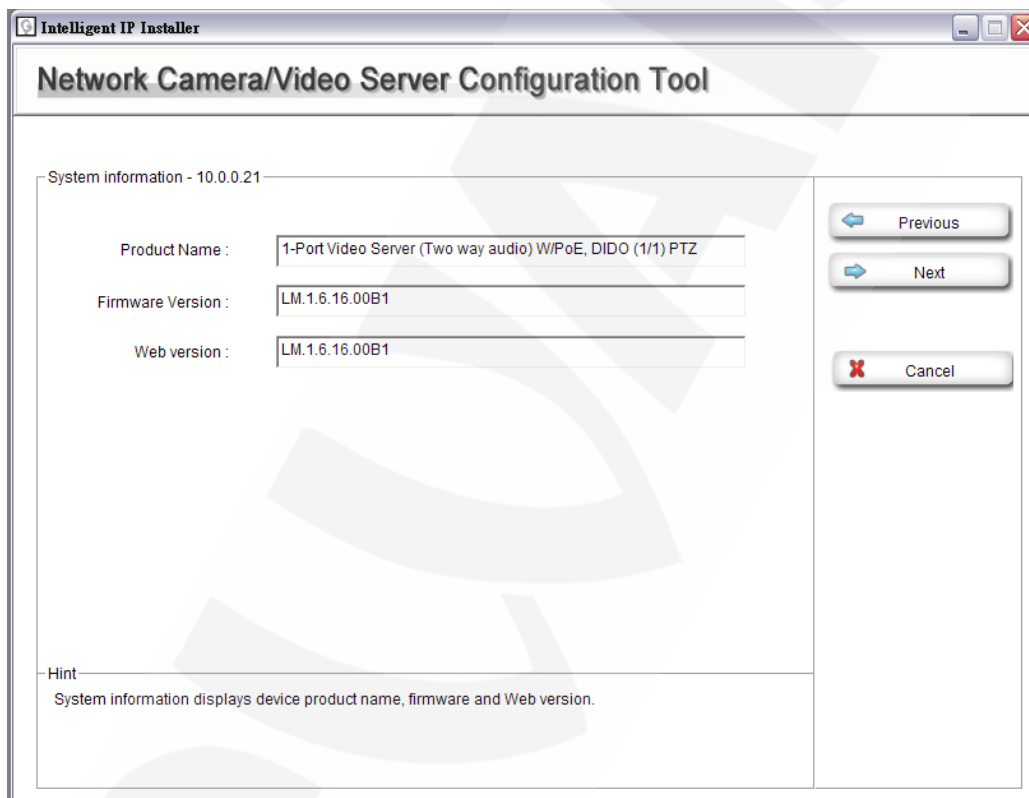
Choose a network camera, click  to change the configurations.

You have to key in the username and password of the administrator to enter the setup page. The following screen will display:

NOTE!

For IP cameras not in local network area (which appear in red in the search screen), you can still use setup to change the configurations of these cameras.

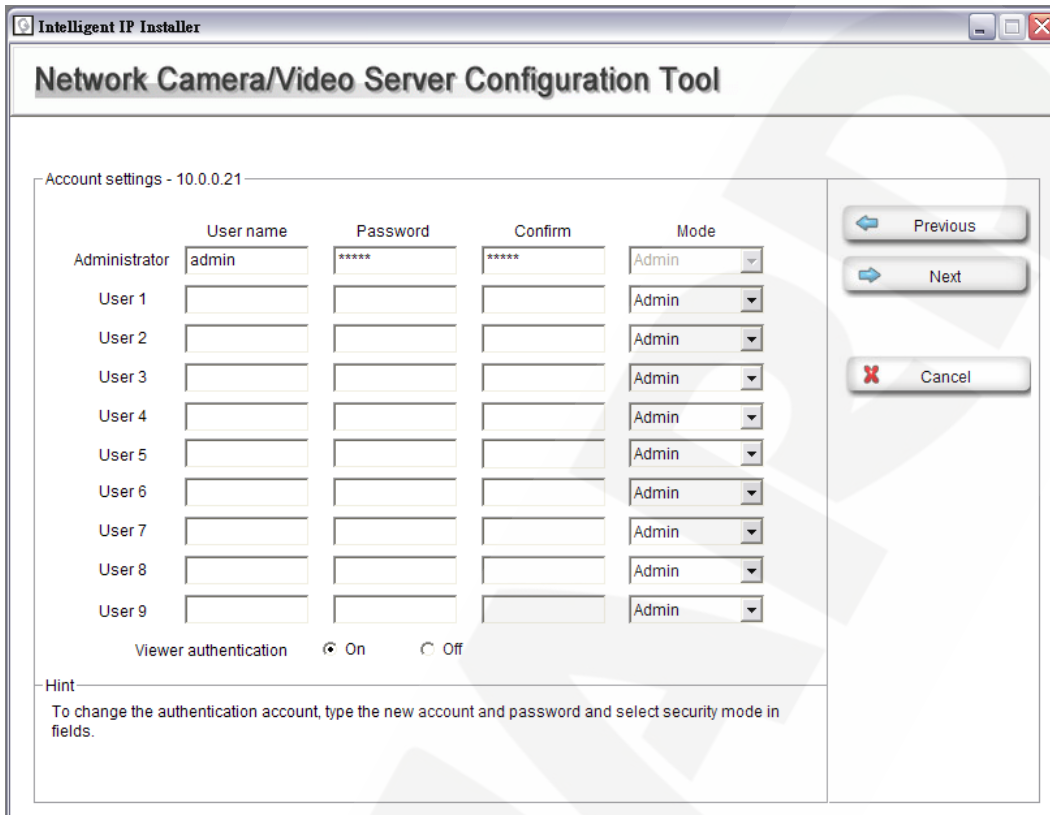
System Information: the system information is displayed. *Picture 3.2.*



Pic. 3.2

Press **[Next]** to continue, **[Previous]** to go back, **[Cancel]** to go to the main page.

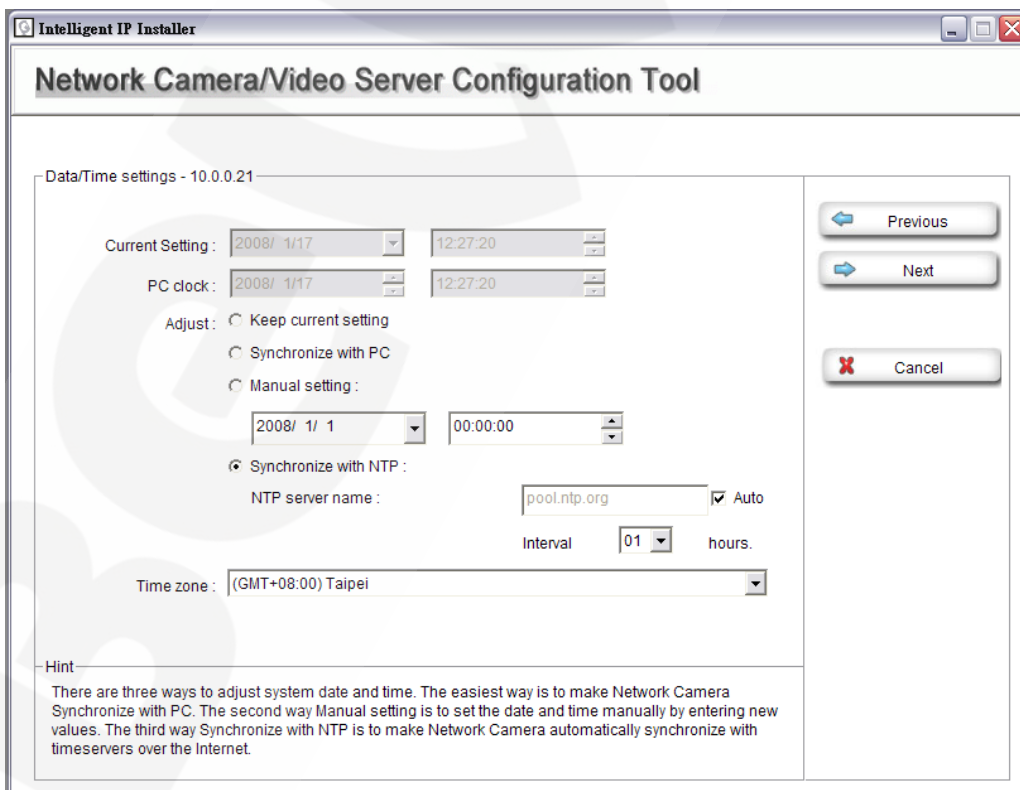
Account settings: the account setting is displayed. You can change the account setting here. *Picture 3.3.*



Pic. 3.3

Press **[Next]** to continue, **[Previous]** to go back, **[Cancel]** to go to the main page.

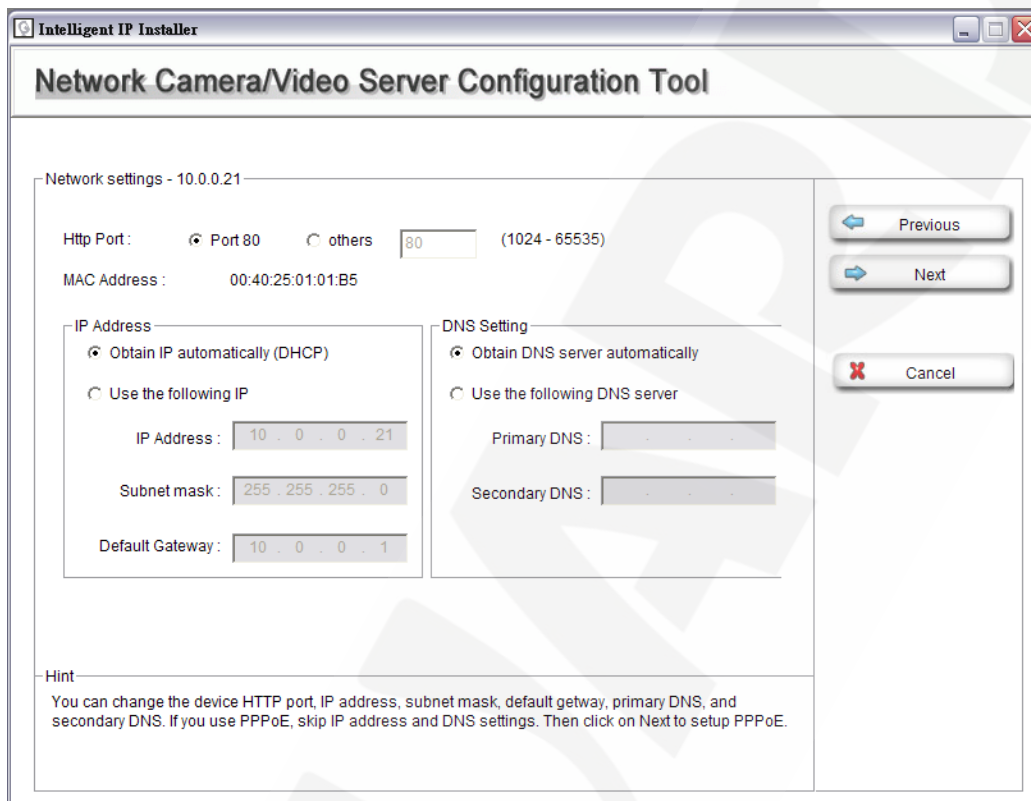
Date/Time settings: you can set the date/time of the network camera here. See “Hint” for details. *Picture 3.4.*



Pic. 3.4

Press **[Next]** to continue, **[Previous]** to go back, **[Cancel]** to go to the main page.

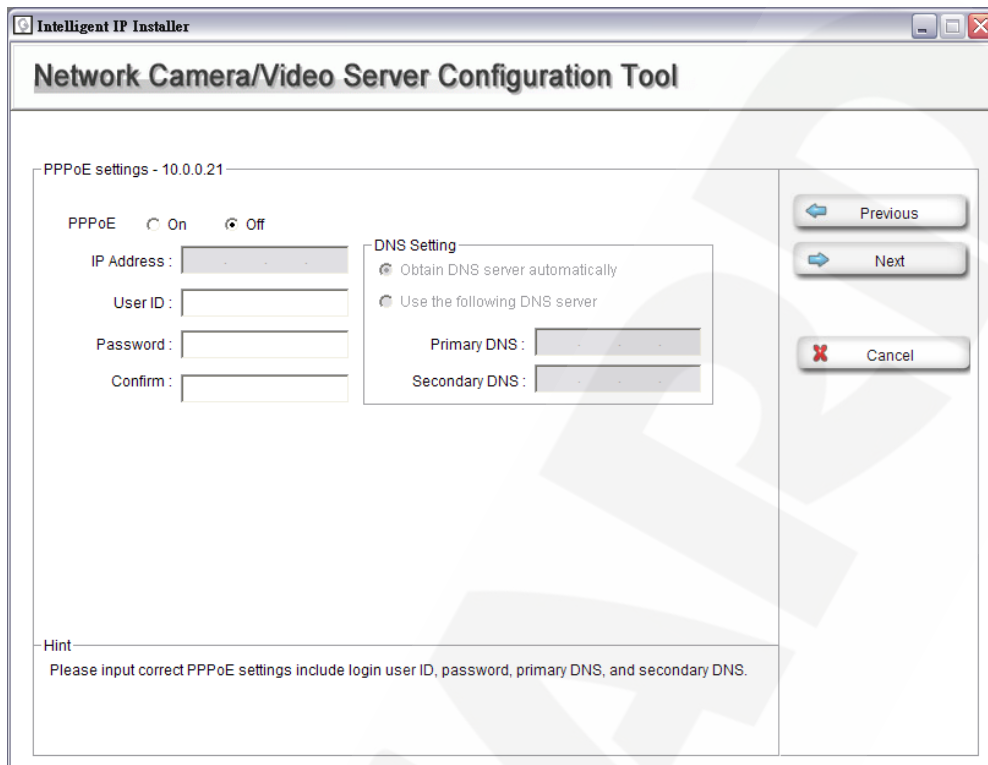
Network settings: you can change the network settings of the network camera here. See “Hint” for details. *Picture 3.5.*



Pic. 3.5

Press **[Next]** to continue, **[Previous]** to go back, **[Cancel]** to go to the main page.

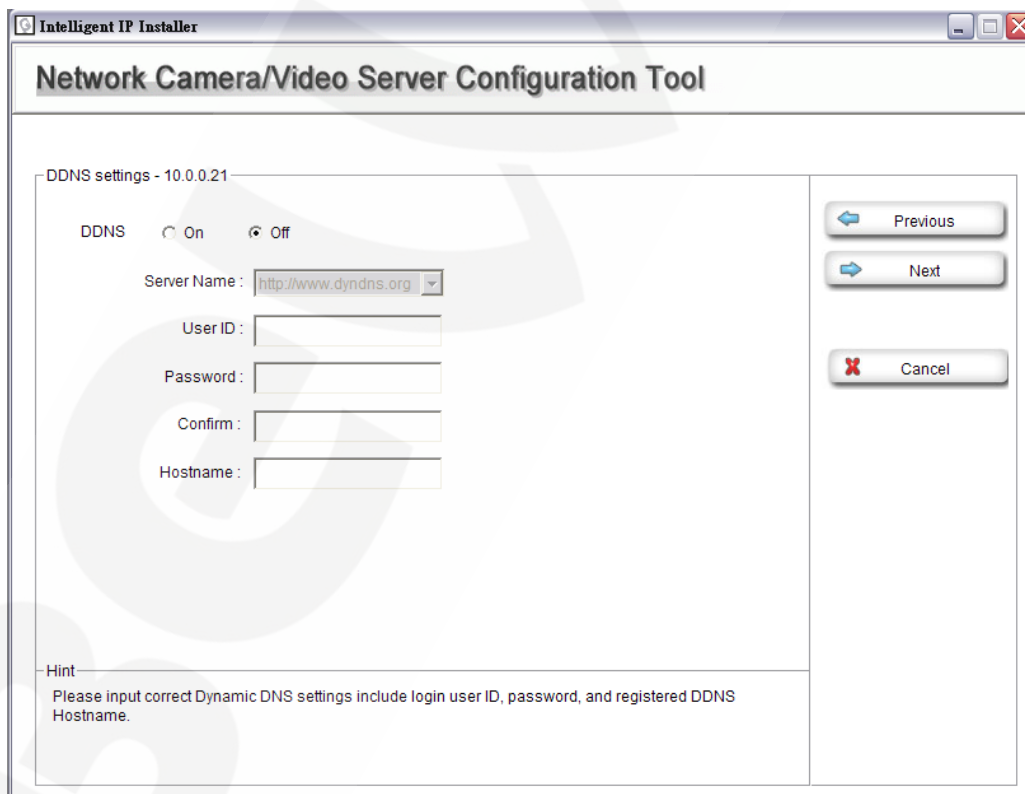
PPPoE settings: you can change the PPPoE settings here. See “Hint” for details. *Picture 3.6.*



Pic. 3.6

Press **[Next]** to continue, **[Previous]** to go back, **[Cancel]** to go to the main page.

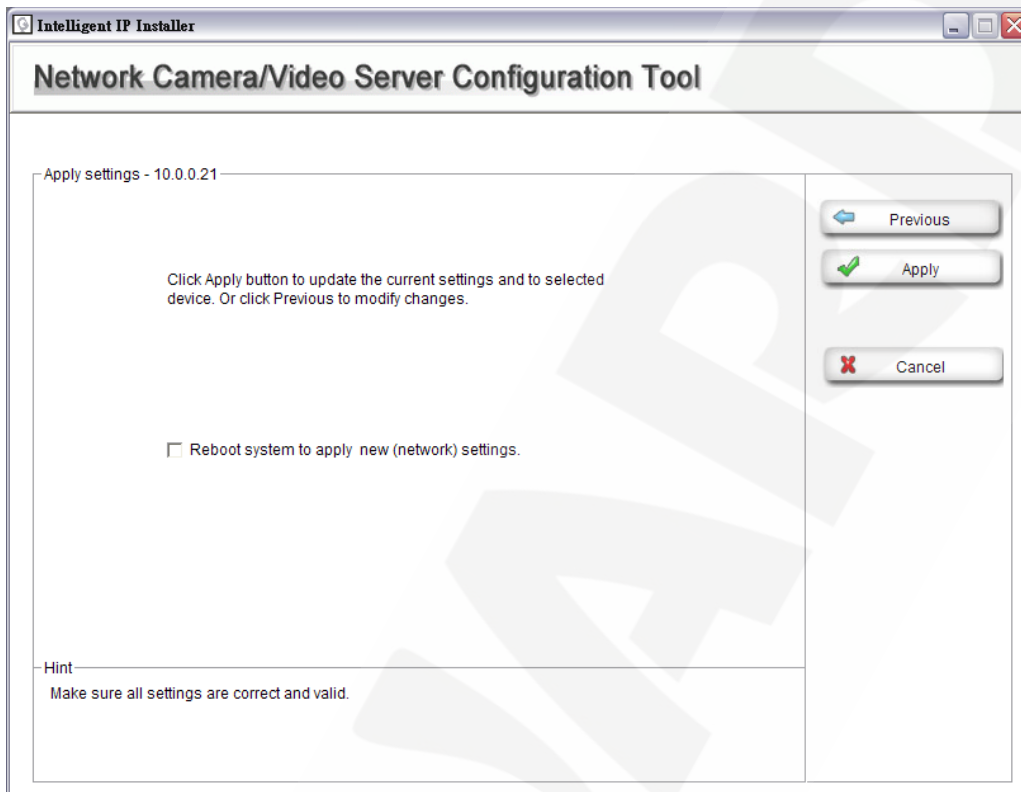
DDNS settings: you can change the DDNS settings here. *Picture 3.7.*



Pic. 3.7

Press **[Next]** to continue, **[Previous]** to go back, **[Cancel]** to go to the main page.


Apply settings: click on **[Apply]** to use the new settings. *Picture 3.8.*



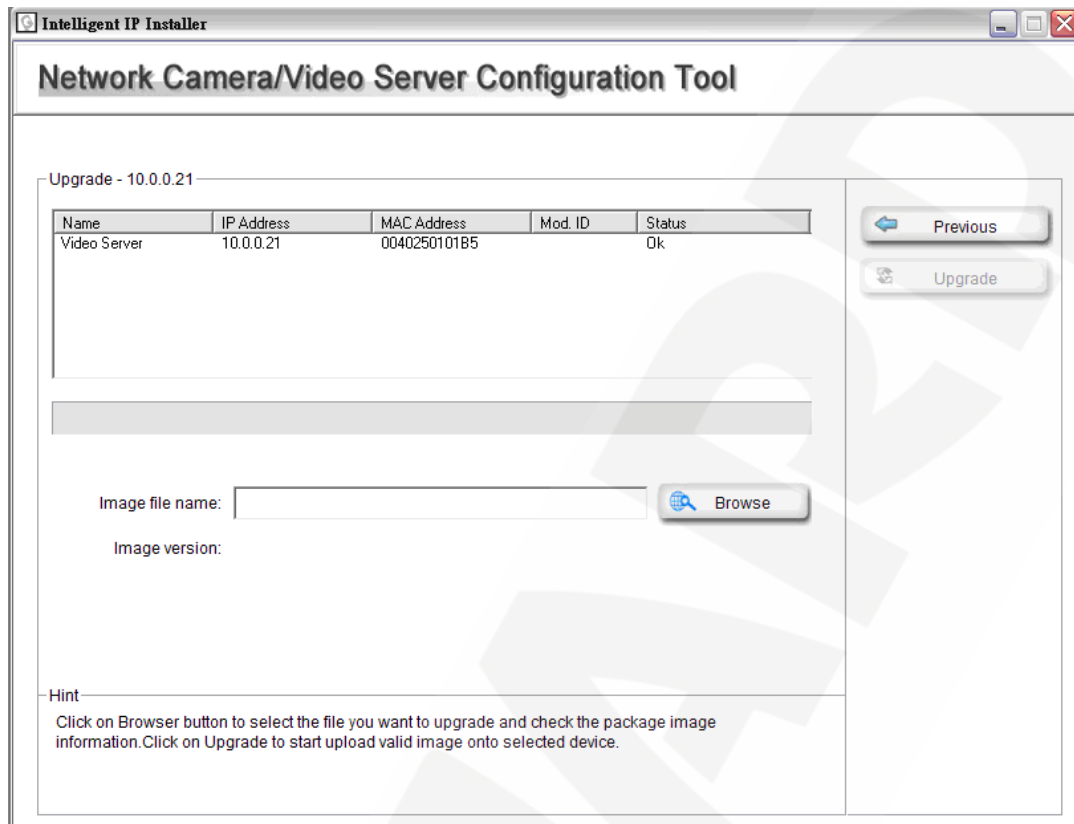
Pic. 3.8

Choose "Reboot system to apply new (network) settings" to reboot after the settings are applied.

3.2. Upgrade

Choose a network camera, click on  to upgrade the firmware. You have to key in the username and password of the administrator to enter the upgrade page.

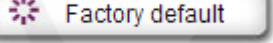
The following screen will display (*Pic. 3.9*):

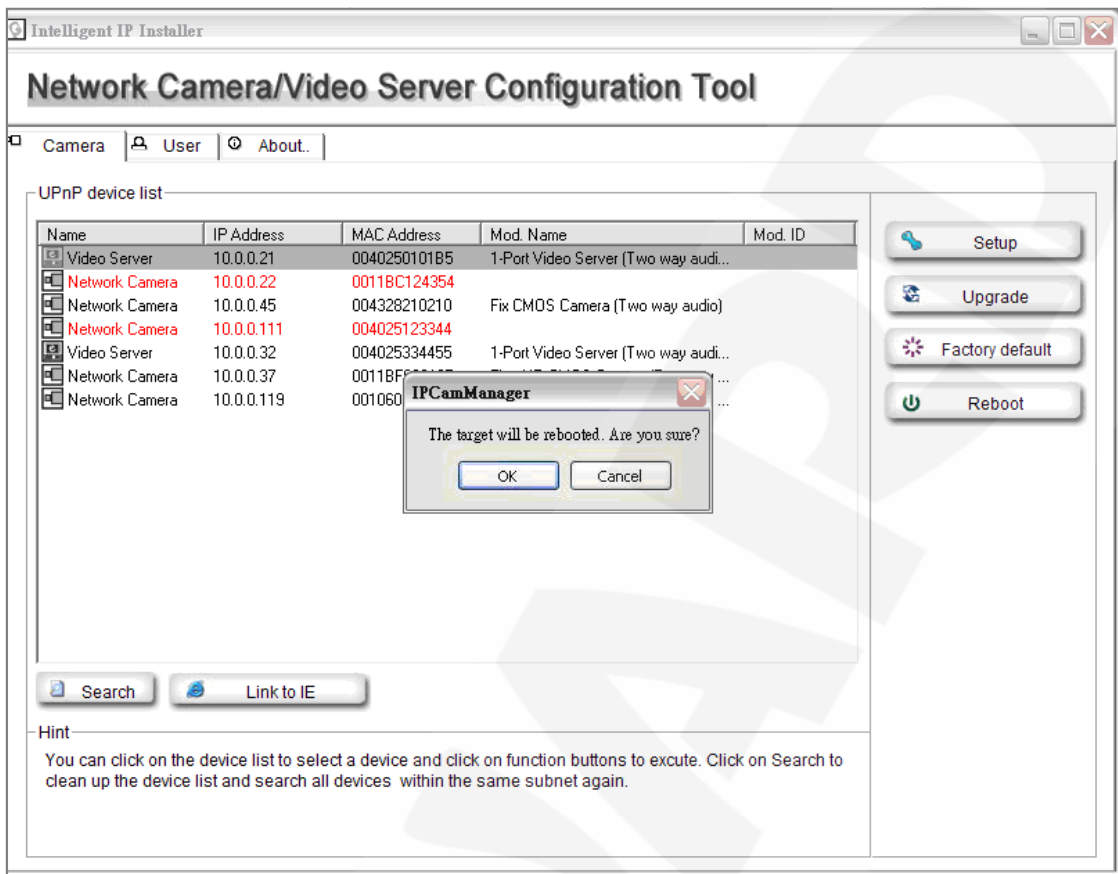


Pic. 3.9

Choose the firmware image file you want to upgrade and press “Upgrade” to start. The device will automatically reboot after upgrade.

3.3. Factory Default

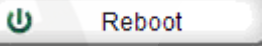
Choose a network camera, click on  **Factory default** to reset the configurations to default. You have to key in the user name and password to use the factory default function. *Picture 3.10.*

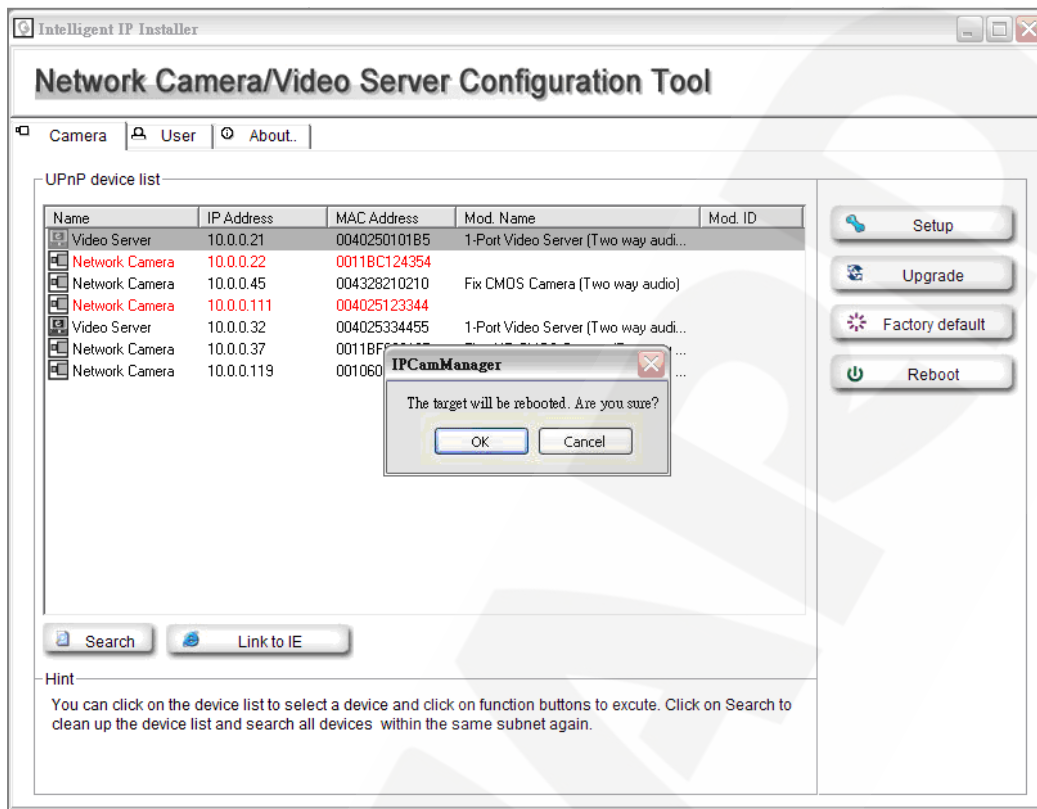


Pic. 3.10

Click **[OK]** to continue. The device will automatically reboot after the configurations set to default.

3.4. Reboot

Choose a network camera, click on  **Reboot** to reboot the device. You need to key in the user name and password to use the reboot function. *Picture 3.11.*

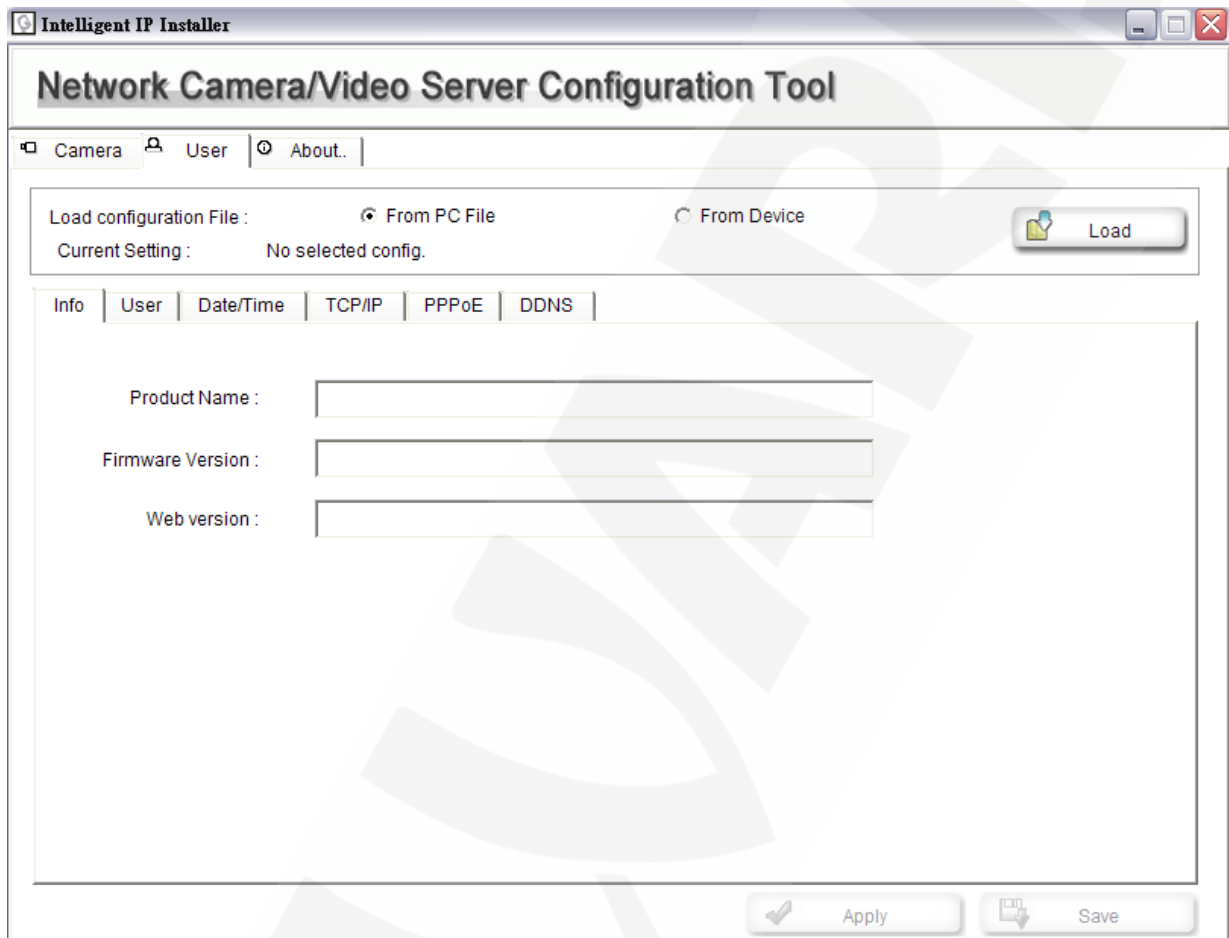


Pic. 3.11

Click **[OK]** to continue. The device will automatically reboot.

Chapter 4. User

The System page provides you all Network Cameras configurations in the network with product or downloaded configuration file information, including Info, User, Date Time, TCP/IP, PPPoE and DDNS. *Picture 4.1.*



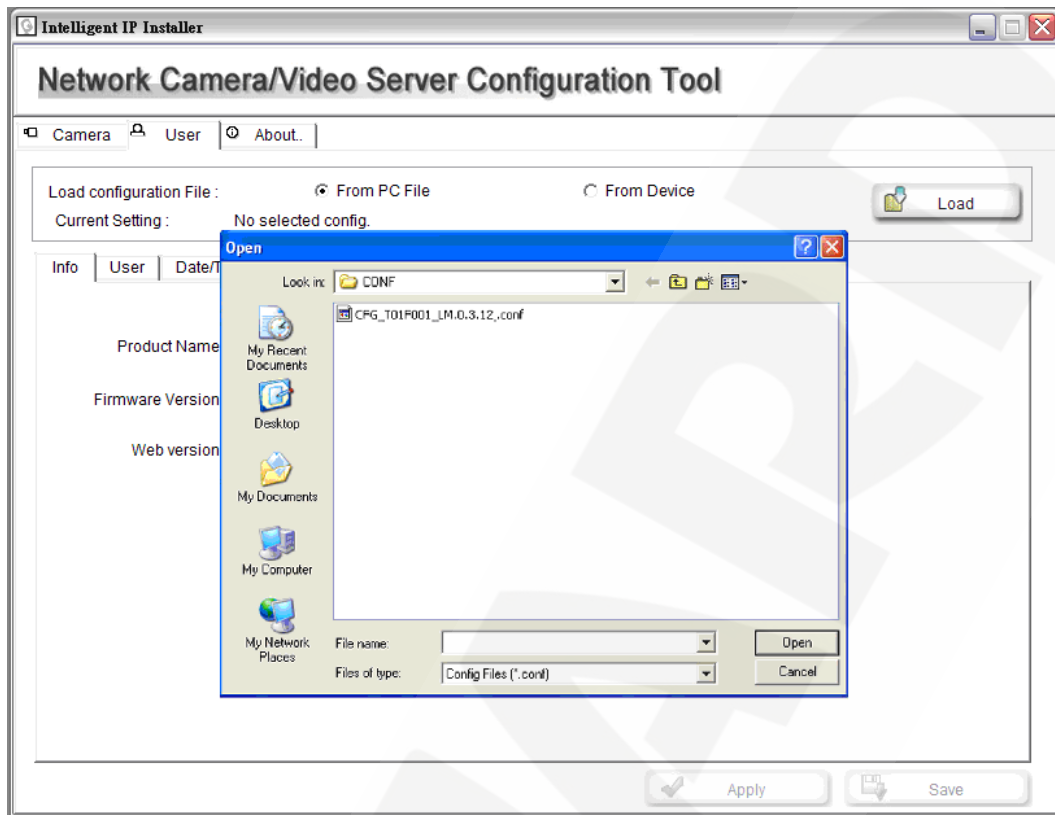
Pic. 4.1

Load configuration File: select "From PC File" or "From Device", the former can load information of downloaded configuration file and the latter can load Network Camera configurations in the network.

From PC File: click it and press **[Load]** to select configuration location from PC. *Picture 4.2.*

NOTE!

Configuration file format is *.conf.

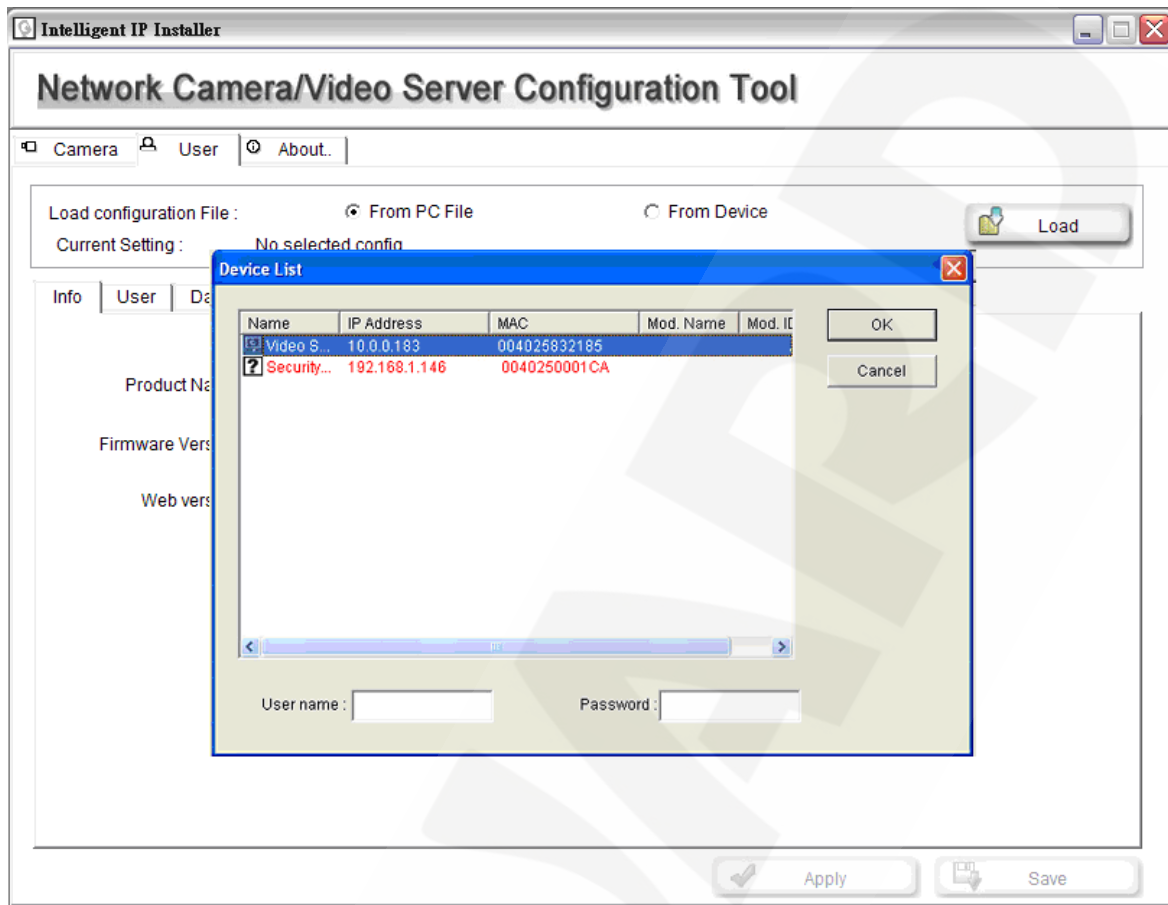


Pic. 4.2

From Device: click it and press **[Load]** to select the specific device in the network. Type the **Username** and **Password** to load configuration from device. *Picture 4.3.*

NOTE!

If you have connected to the specific device before, you do not need to type the Username and Password again.

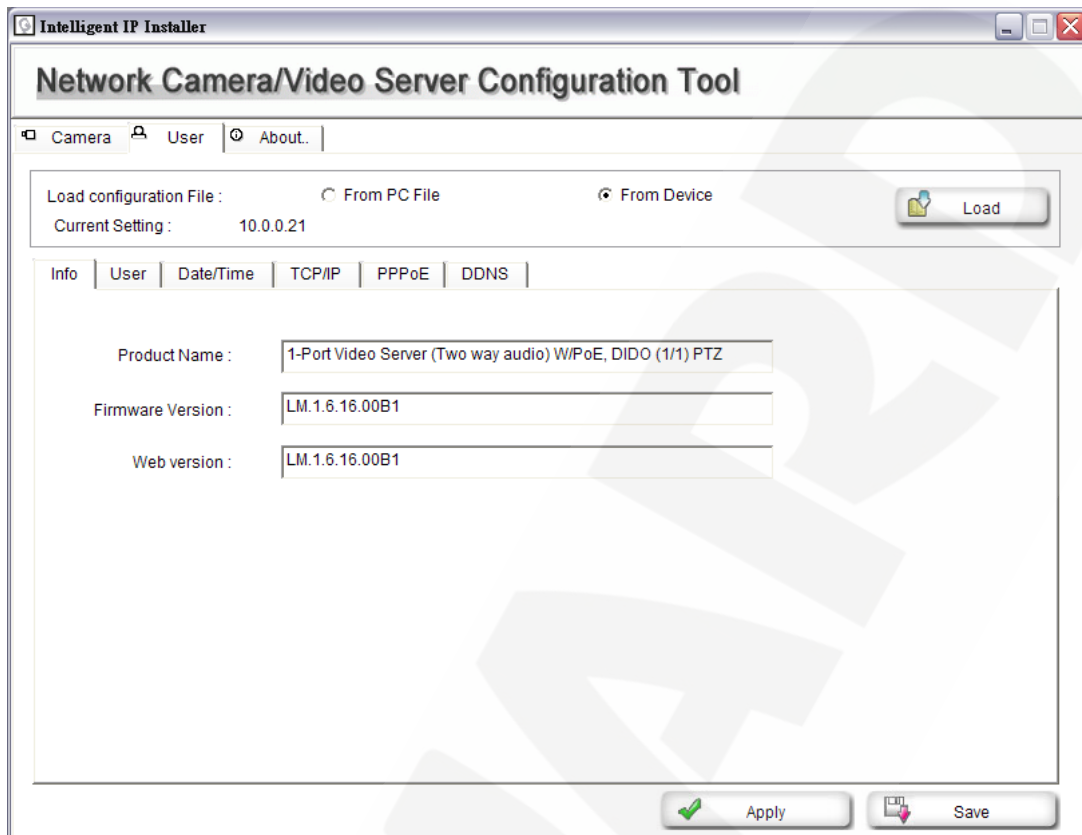


Pic. 4.3

After loading, you can get configuration from PC files or devices. Intelligent IP Installer displays the sub folders including Info, User, Date Time, TCP/IP, PPPoE and DDNS.

4.1. Info

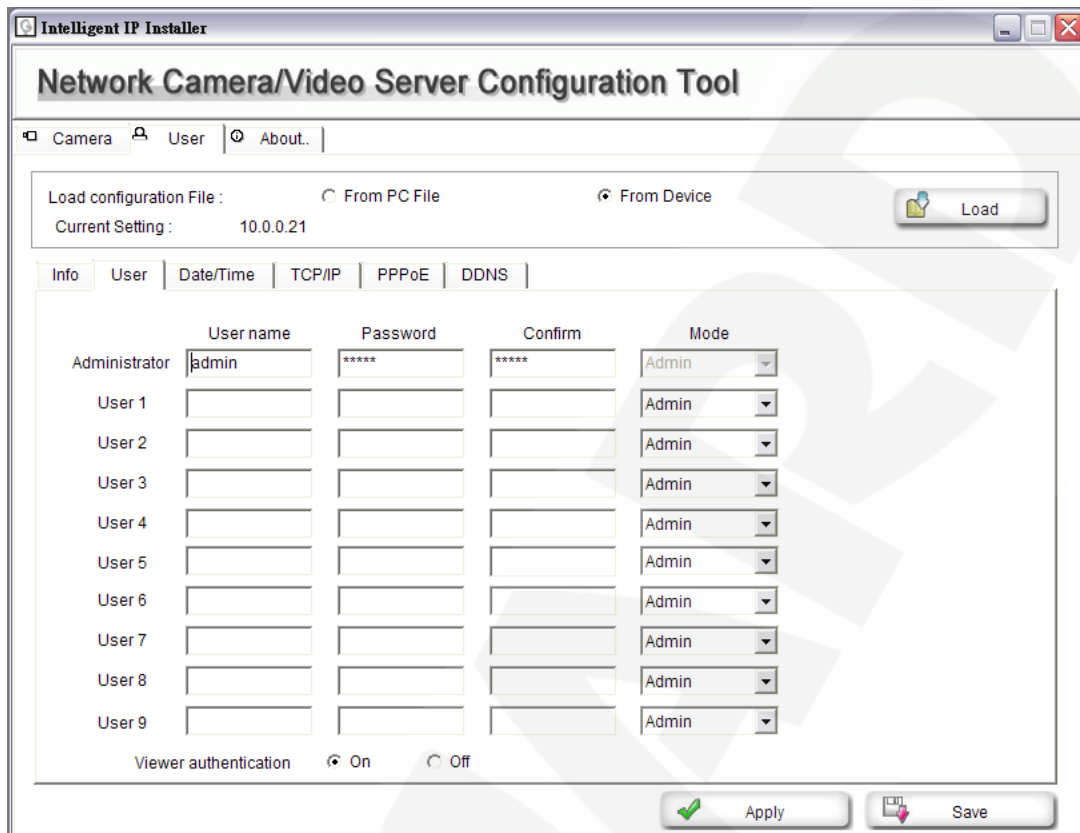
The Info page provides you with product factory information, including Product Name, Firmware Version and Web version. *Picture 4.4.*



Pic. 4.4

4.2. User

The Network Camera default account and password are “admin/admin”. Intelligent IP Installer provides to assign a password if the Network Camera is intended to be accessed by others. Use this menu to set the username and password of Administrator and up to 9 different users (User 1 to User 9), and the authentication access right of each group. *Picture 4.5.*



Pic. 4.5

Username: set a user name between 5 and 16 characters.

Password: set a password between 5 and 16 characters.

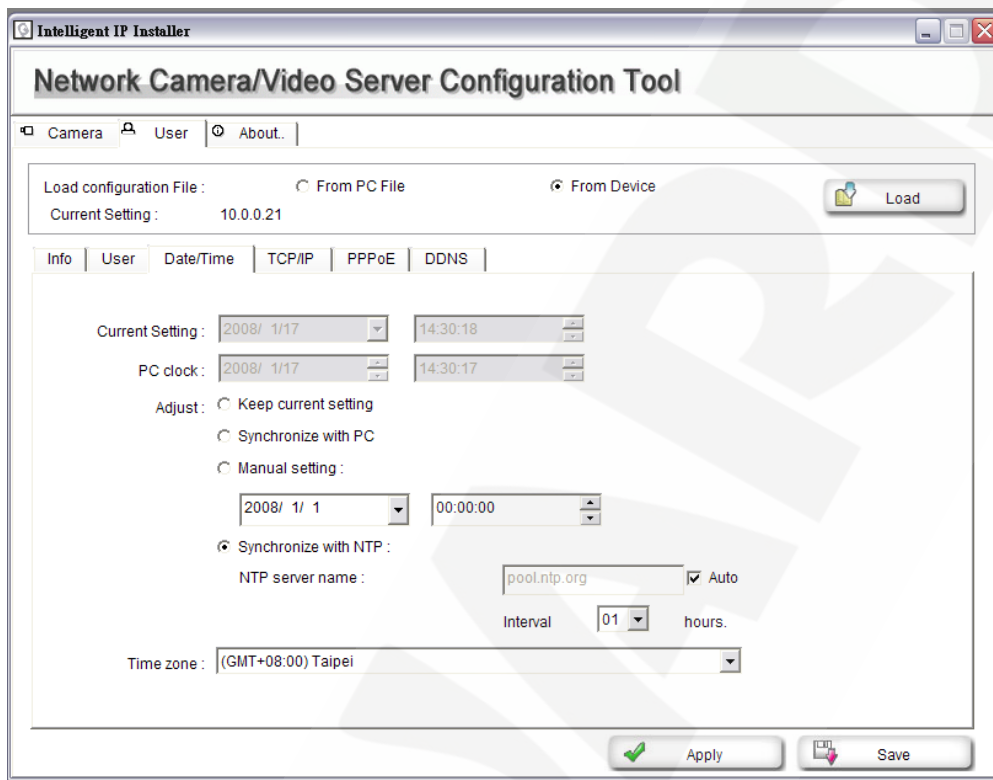
Confirm: re-type the password to confirm.

Mode: set a user to Admin, Operator or Viewer mode.

Viewer authentication: allows any viewer direct access to Live View.

4.3. Date/Time

Picture 4.6.



Pic. 4.6

Current date & time: this displays the current date and time of the camera.

PC clock: this displays the date and time of the monitoring PC clock.

Adjust: select one of four time adjusting modes.

Keep current setting: select this mode to keep the current date and time of the camera.

Synchronize with PC: select this mode to make the date and time of the camera the same as for the monitoring PC.

Manual setting: select this mode to manually adjust the date & time of the camera.

Synchronize with NTP: specify the NTP server name and the Refresh Interval to synchronize the date and time of the camera with those of the time server, known as the NTP (Network Time Protocol) server.

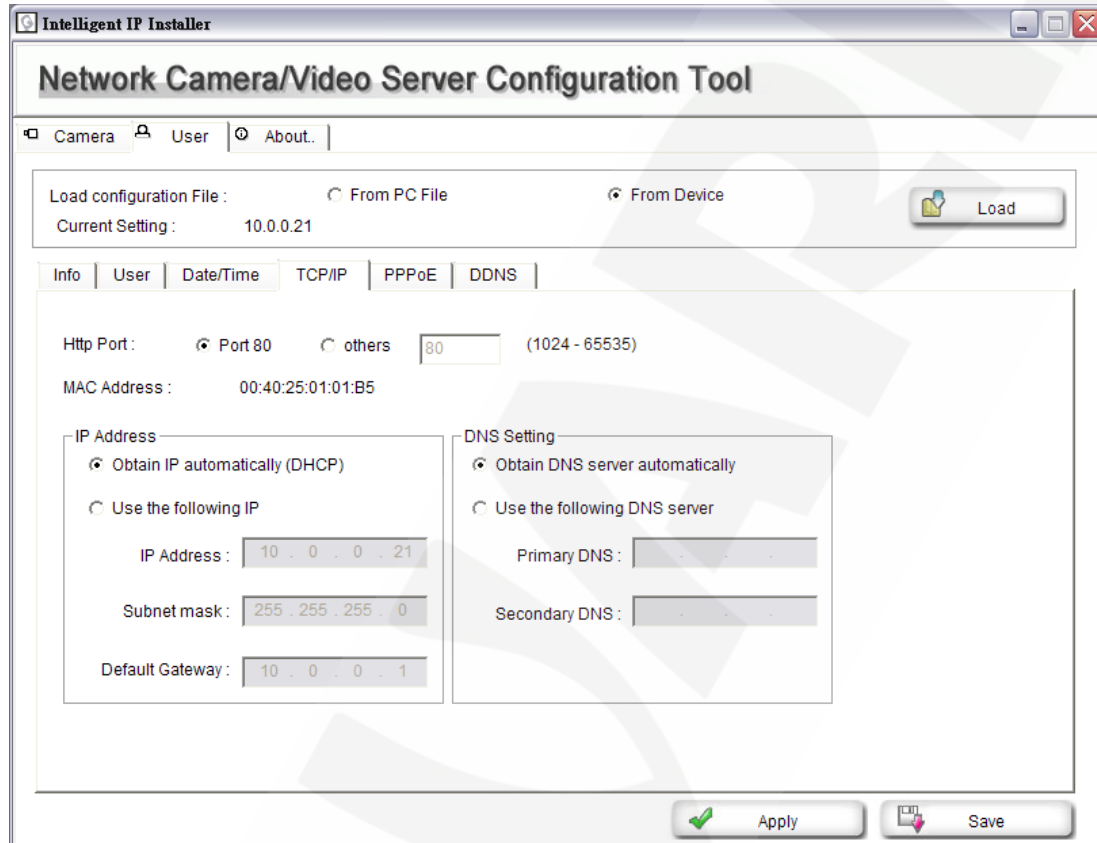
NOTE!

The NTP server (Network Time Protocol) is the time server which is an Internet standard protocol (built on top of TCP/IP) that assures accurate synchronization to the millisecond of computer clock times in a network of computers.

NTP server name: type the host name or IP address of the NTP server, up to 64 characters.

Time zone: select the time zone and time difference from Greenwich Mean Time in the area where the camera is installed from the pull down box.

4.4. TCP/IP



Pic. 4.7

HTTP Port: select port 80 in general situations. If you want to use a port number other than 80, select the text box and enter a port number between 1024 and 65535.

NOTE!

When you have set the HTTP port number to a number other than 80 on the Network setting page or in the Setup Program, access the camera by typing the IP address of the camera on the web browser as follows:

Example: when HTTP port number is set to 2000 → <http://192.168.0.100:2000/>

MAC Address: displays the MAC address of the camera.

IP Address

Obtain IP automatically (DHCP): if a DHCP server is installed on the network, select this while the IP address is assigned by the DHCP server.

NOTE!

When you set Obtain IP automatically (DHCP), make sure that the DHCP server is working on the network.

Use the following IP: select this when a fixed IP address is set.

IP Address: enter the IP address of the camera.

Subnet mask: enter the subnet mask.

Default Gateway: enter the default gateway.

DNS Setting

Obtain DNS server automatically: if a DHCP server is installed on the network, select this while the DNS server is assigned by the DHCP server.

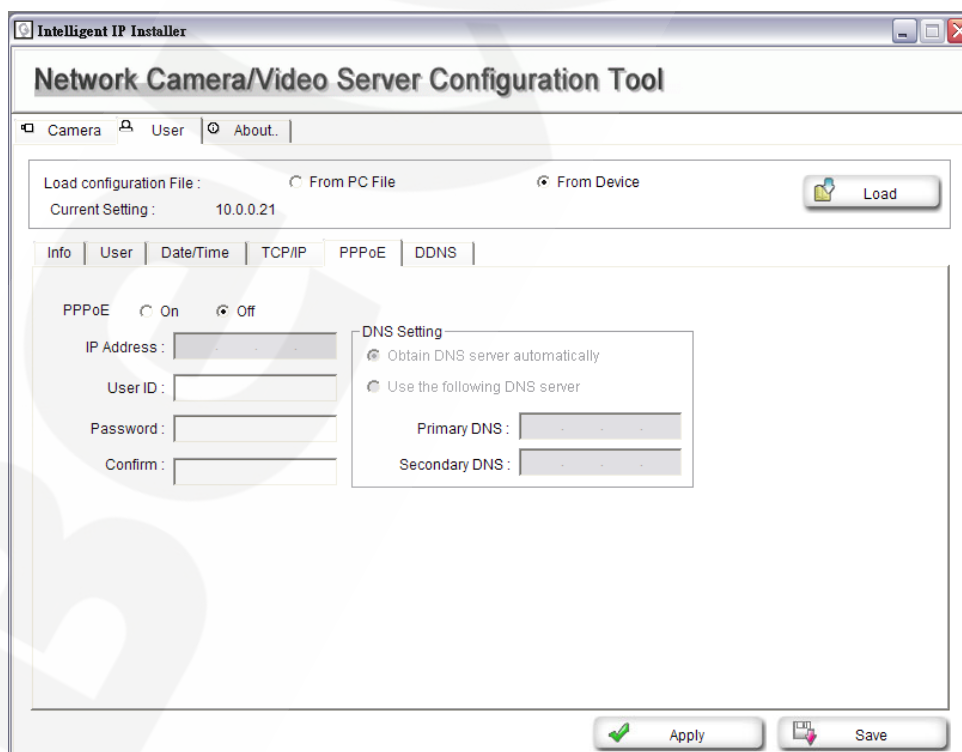
Use the following DNS server: select this when you set the fixed address as the IP address of DNS server.

Primary DNS: enter the IP address of the primary DNS server.

Secondary DNS: enter the IP address of the secondary DNS server, if necessary.

4.5. PPPoE

Use this when you connect the camera through PPPoE (Point-to-Point Protocol over Ethernet). PPPoE connection is the protocol that is widely used in xDSL (digital affiliate line such as ADSL, VDSL or SDSL) as the authentication and connection system. *Picture 4.8*



Pic. 4.8

IP Address: the IP address obtained at the PPPoE connecting with network.

User ID: enter the user ID for authentication necessary for PPPoE connections. Type it up to 64 characters.

Password: enter the password for authentication necessary for PPPoE connections. Type it up to 32 characters.

Confirm: re-type the password to confirm.

Obtain DNS server automatically: select this to obtain the address of DNS server automatically.

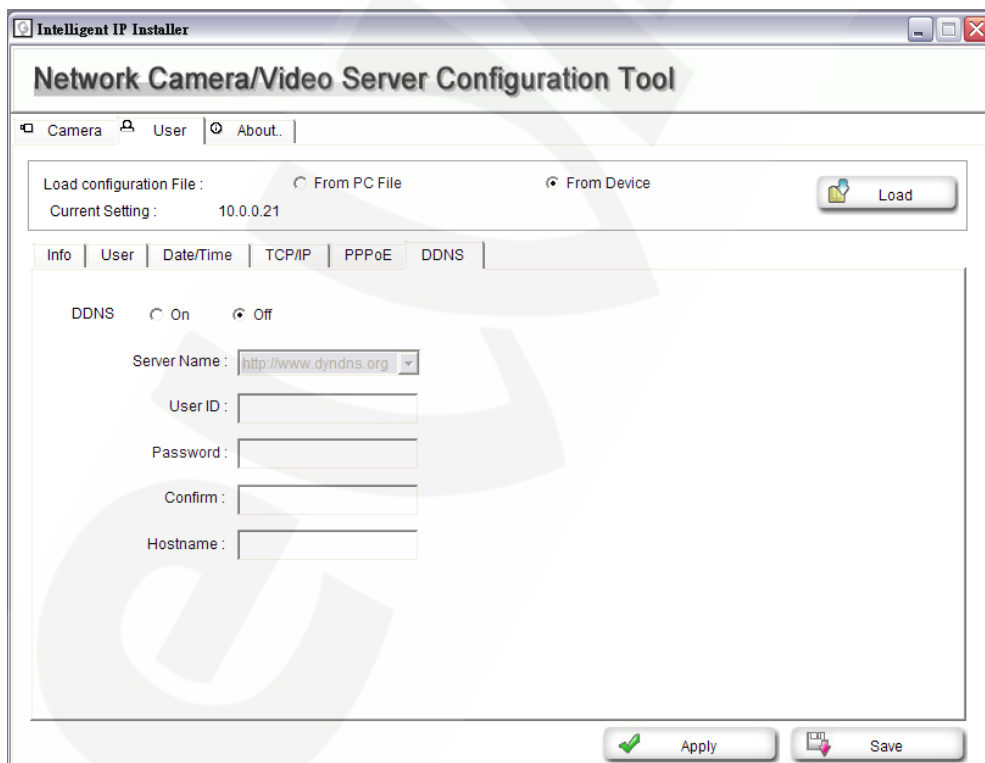
Use the following DNS server: select this when you set the fixed address as the IP address of DNS server.

Primary DNS: enter the IP address of the primary DNS server.

Secondary DNS: enter the IP address of the secondary DNS server.

4.6. DDNS

Picture 4.9.



Pic. 4.9

Server Name: select the DDNS Server

User ID: enter the user ID for authentication necessary for DDNS connections. Type it up to 64 characters.

Password: enter the password for authentication necessary for DDNS connections. Type it up to 32 characters.

Confirm: re-type the password to confirm.

Hostname: enter the host name that is registered to the DDNS server.

NOTE!

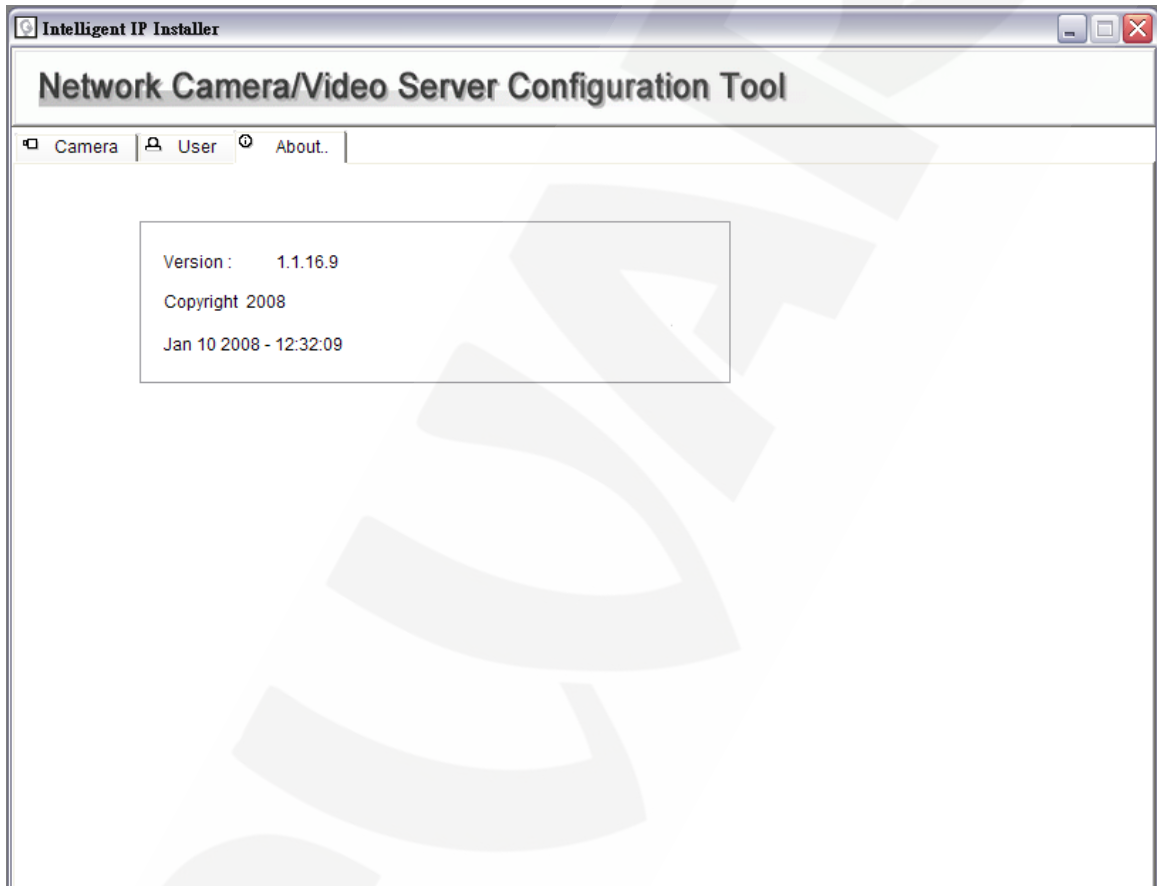
When you want to use DDNS function, you need to register an account in DDNS server first.

Chapter 5. About

This page displays Intelligent IP Installer information including Version, Copyright and Product Date information. *Picture 5.1.*

NOTE!

This computer procedure is protected by copyright law and international conventions. Distributing the entire software or part of it without permission may cause serious civil and criminal sanctions.



Pic. 5.1